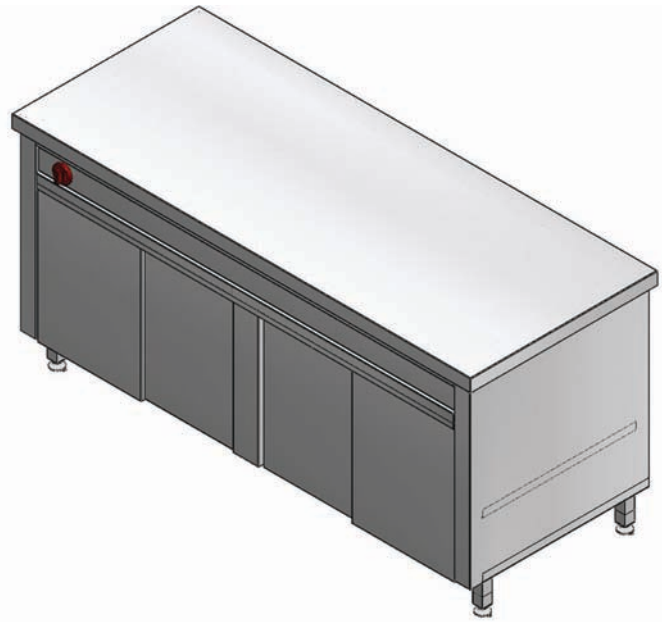


NEUTRAL COUNTERS

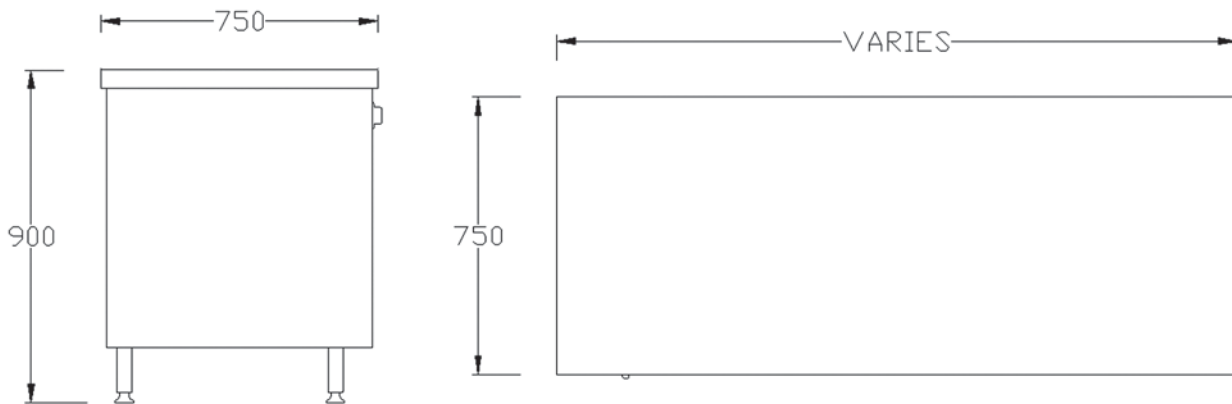
Neutral Counter-Heated

Features

- 1. Top** - 0.9mm 430 st/steel c/w 1.2mm galvanised backing plates.
- 2. Body** - Manufactured from 0.9mm 430 st/steel.
- 3. Doors** - Manufactured from 0.9mm 430 st/steel, door filler Manufactured from 1mm galvanised.
- 4. Element** - 2 Kw element.



Drawings



Specifications

Dimensions: 1850(W) x 750(D) x 900(H)
 1500(W) x 750(D) x 900(H)
 1200(W) x 750(D) x 900(H)
 850(W) x 750(D) x 900(H)

Power consumption: 15 amp 220 volt

Optional Extras

Tops can be manufactured from: 1.2mm 430 st/steel
 0.9mm 304 st/steel
 1.2mm 304 st/steel

Tray slides